

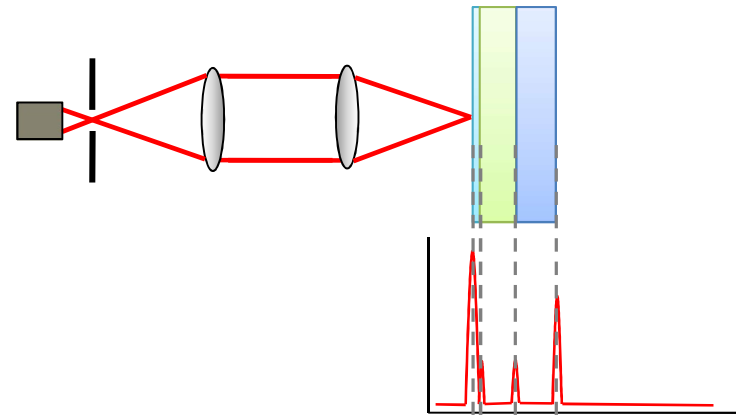
Lein Applied Diagnostics



Optical Technology

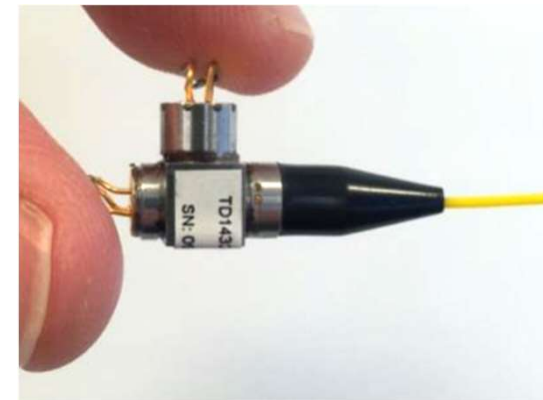
Optical Measurement

- Confocal scan - highly localised
- Measures physical dimensions and derived parameters

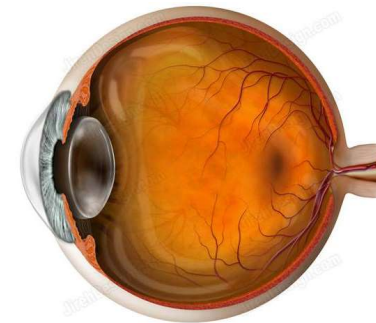
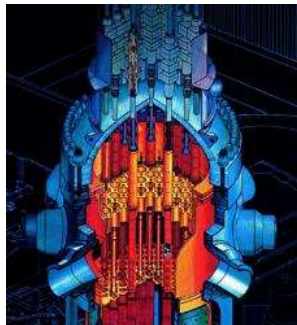
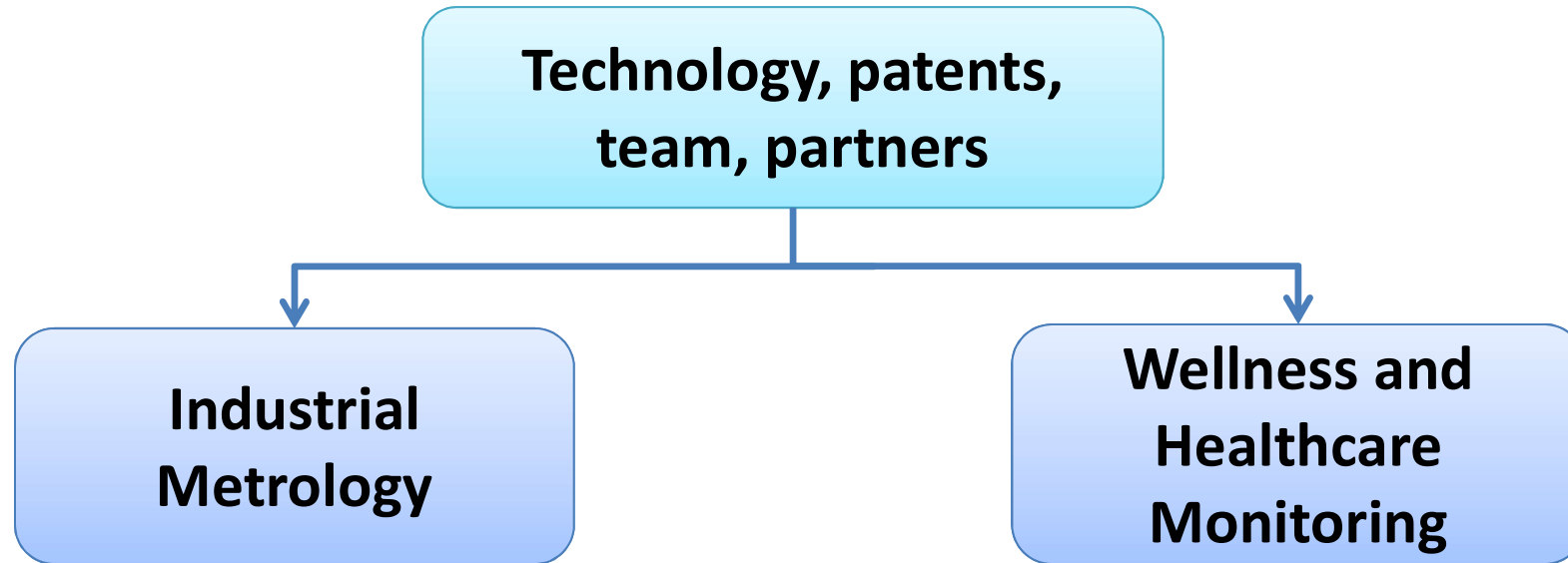


Bi-di from telecoms industry

- Core of measurement system
- Very compact
- Highly accurate
- Non-contacting
- Low price point



Applications



Ophthalmology

➤ Ophthalmology

- Corneal thickness
- Anterior chamber depth
- Lens thickness
- Cataract detection

➤ Pachymeter

- Glaucoma testing
- Lasik surgery
- Handheld, non-contacting
- \$250m market



Diabetes



OGTT

IGTT

HbA1c



Pre-diabetes

1/3rd of adults

Diagnosis

Diabetes

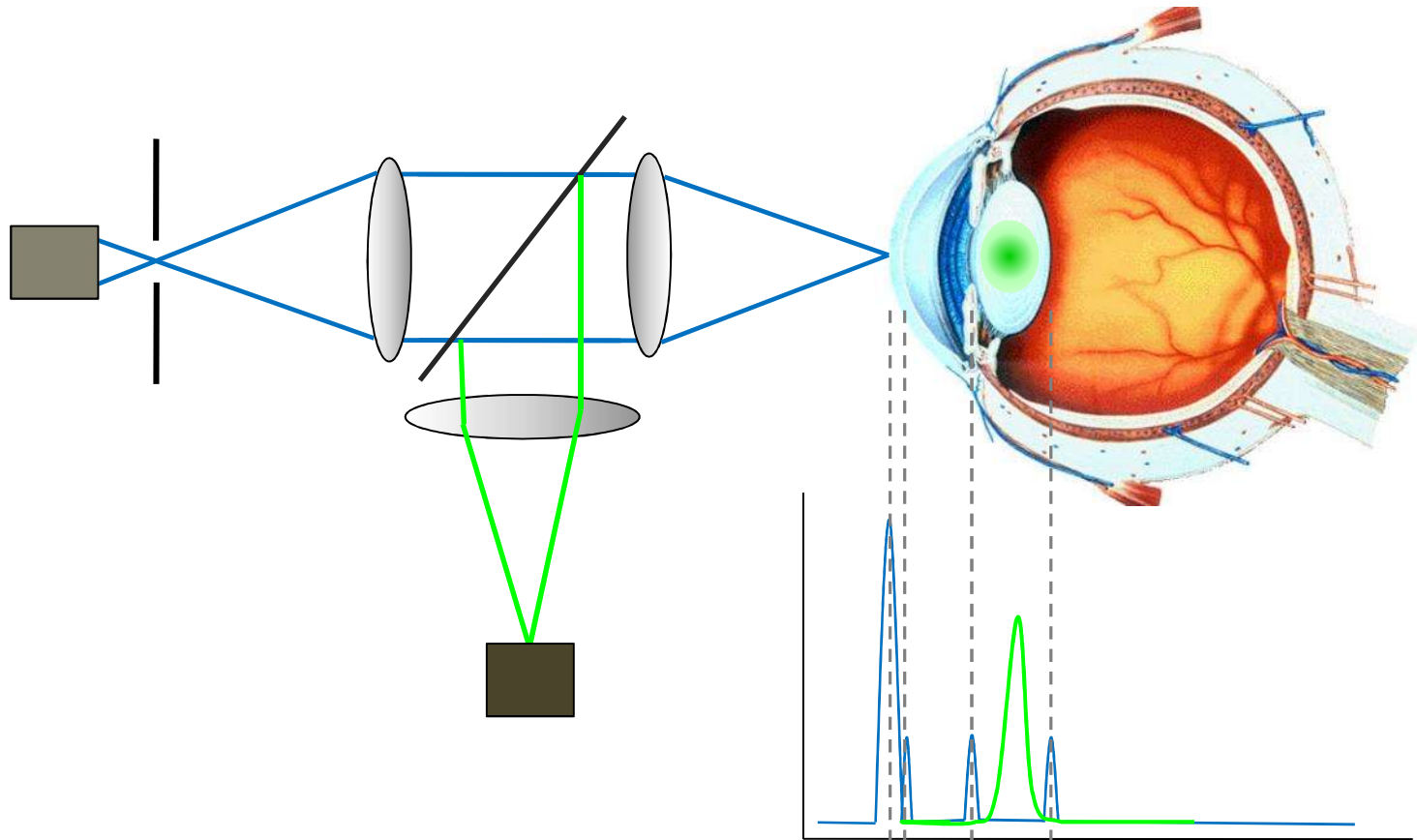
7% of population

25% after 5 years

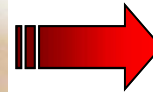
70% will get diabetes

Fluorescence Measurement

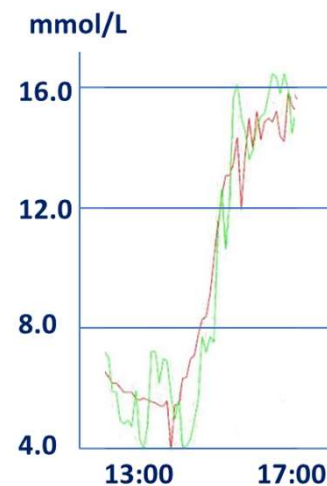
- Confocal scan
- Combine with fluorescence detector



Blood Glucose Monitoring



- Diabetic patient – wants no pain, less embarrassment, more convenience
- Clinician – better compliance
- Healthcare provider – reduced expenditure



Summary

- Optical measurement technology
 - Non-contacting
 - Compact
 - Low cost
- Wellness and healthcare monitoring
 - Pre-diagnosis
 - Diagnosis
 - Monitoring

Dan Daly

E-mail: dan.daly@lein-ad.com

Tel: +44 (0) 7739 847474

